



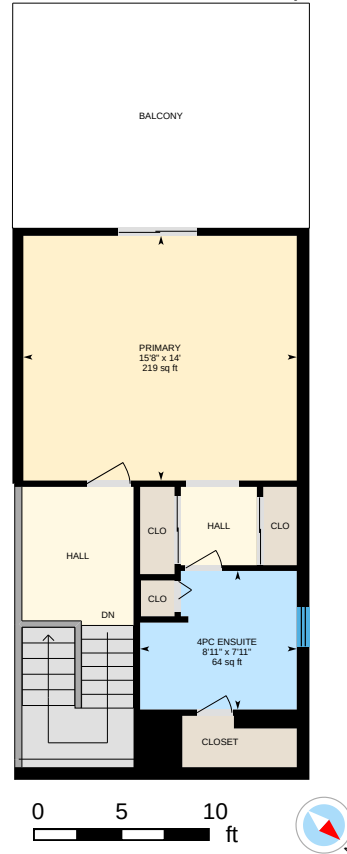
Main Floor

Exterior Area 1016.83 sq ft



2nd Floor

Exterior Area 544.62 sq ft



Basement (Below Grade)

Exterior Area 991.58 sq ft



1159 Kos Blvd, Mississauga, ON

For illustrative purposes only. All reported dimensions, property sizes and floor areas are approximate and subject to independent verification. To the extent permitted by law, no warranty is made as to accuracy or completeness, and no liability will be accepted for any errors or omissions.